

FROM THE
WORLD'S
#1
SUPPLIER
OF DECON
SYSTEMS

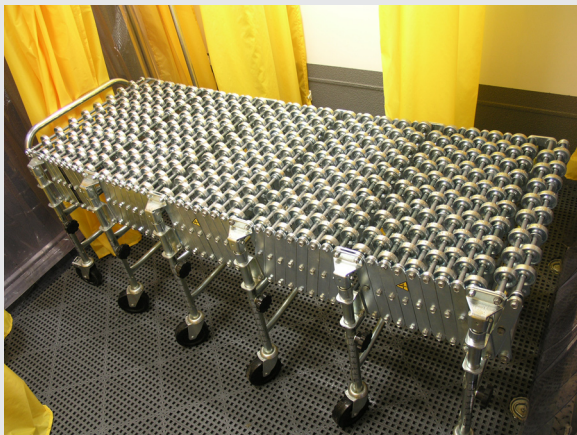
FIXED IN PLACE DECON SYSTEM



FIP 28' DECONTAMINATION SYSTEMS

- EASY TO USE
- SAFETY ENGINEERED
- BUILT TOUGH

ACCOMMODATE AMBULATORY AND NON-AMB PATIENTS



Nor E Non-Amb Roller System featured inside the MEDecon 3L Decon Trailer



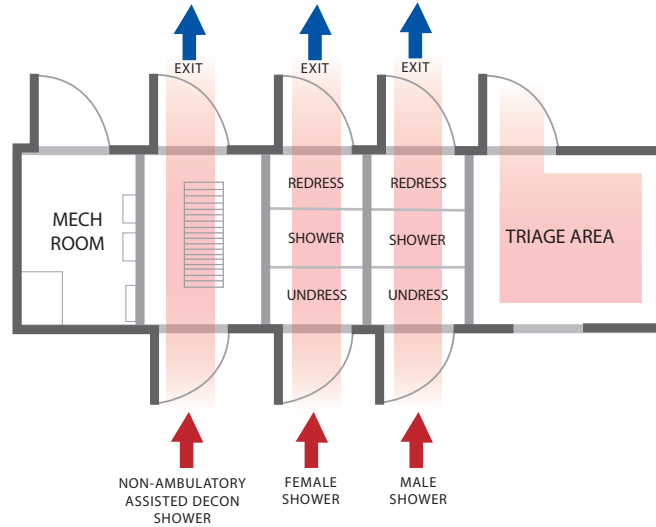
Accommodate ambulatory and non-ambulatory patient flow seamlessly with FIP 28' Decontamination Systems from Nor E. Built tough and safety engineered for maximum efficiency, Nor E Decon Systems are trusted throughout the world to perform when you need them most. The FIP 28' is self contained and operated and deployed easily in just 10 minutes by a single responder; "just add water".



FIP28'

DECONTAMINATION SYSTEMS

3-LANE, 28-FOOT



FEATURES

- Easily accessed by side-entry, side exit doors
- Traige area for assisting patients
- 2 (two) three-stall decontamination lanes (Undress, Shower/Rinse, Dry/Redress) for ambulatory patients
- 1 (one) large assisted decontamination chamber with non-ambulatory roller system (Undress, Shower/Rinse, Dry/Redress) for non-ambulatory patients, families and responders
- Portable Decon Roller System
- On-board automatic waste water discharge system
- Fluorescent interior lights are sealed from chemicals and water
- Sealed and washable biological/chemical resistant interior
- Hard mounted exterior lighting
- Includes soap induction system and plumbing for water inlet

OPTIONS

- Fresh water storage bladder and transfer pump system for applications where city water is not available
- Waste water bladders, 600 or 1200 USG capacity
- Propane 200,000 BTU water heater
- IDecon personal care & identity kits
- FirstCare kits for pre-decontamination

FIP28'

Unit Dimensions	28'l x 8'w x 12'10"h
Interior	3/4" exterior grade plywood floor, exterior surface undercoated, interior chemically sealed liner
Lighting	Flourescent 120V
Exterior Lighting	Hard mounted
Roller System	Stainless steel
Operations Manual	{ 1 }



GS-07F-0354N

1-866-380-8455 | www.nor-e.com | info@nor-e.com